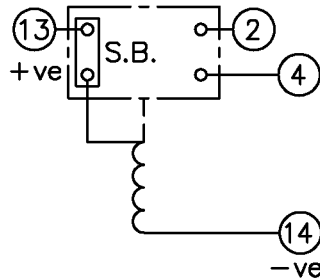


LOOKING ON FRONT OF RELAY

2112W50082



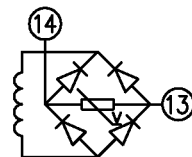
**NOT SUBJECT TO UPDATE
ONCE COPIED / PRINTED
OR DOWNLOADED**

KEY

- make contact
- break contact
- c/o contact
- ext. conn
- plug bridge - shorting
- metering point
- 5Kv barrier
- test socket - shorting
- plug & socket

CONTACT CONFIG.	OUTPUT CONTACT PAIR / TERMINAL No.					
	1-3	2-4	5-7	6-8	9-11	10-12
1M 1SB	/	M	/	/	/	/
1B 1SB	/	B	/	/	/	/

NOTE: WHEN RECTIFIER IS SPECIFIED COIL CONNS. ARE AS SHOWN.



FRAME REFERENCE: E2FAQM.

FRAME TERMINAL BLOCK ASSY: -

ASSEMBLY INSTRUCTIONS: -
TYPICAL ASSEMBLY DRAWING 2995G10032.
AT INDICATED POSITIONS FIT AS FOLLOWS:
T - FIT TRIP ISOLATION CONTACT 2995B10053
S - FIT STANDARD CONTACT 2995B10054
SECURE CONTACTS USING FIXING SCREW 2109F99009.
POSITIONS SHOWN BLANK ARE UNUSED

2	T	1
4	T	3
6		5
8		7
10		9
12		11
14	S	13
16		15
18		17
20		19
22		21
24		23
26		25
28		27

VIEW FROM NUMBERED SIDE OF BLOCK

OUTER TERMINAL BLOCK ASSY: -

ASSEMBLY INSTRUCTIONS: -
TYPICAL ASSEMBLY DRAWING 2995G10029.
AT INDICATED POSITIONS FIT AS FOLLOWS:
S - FIT STANDARD CONTACT 2995B10051
HC - FIT 'HEAVY CURRENT' KIT 2995G10030
WHERE IS SHOWN FIT CT SHORTING KIT 2995G10031
POSITIONS SHOWN BLANK ARE UNUSED.
ALL POSITIONS FIT SCREW 2106F12506.

2	S	1
4	S	3
6		5
8		7
10		9
12		11
14	S	13
16		15
18		17
20		19
22		21
24		23
26		25
28		27

VIEW FROM INSIDE FACE

2 RDW 1	16/01/04 27/04/99	MN112/2606	Title: T.B. AND W.D. FOR AR112SB 2 CONTACT RELAYS IN EPSILON E2 CASE.		First used on:	
			Reyrolle Protection Hebburn.	Similar Articles:		
ISSUE	DATE	MOD.No.		Original Scale:	Supersedes:	Drq.No.
DRAWN: A.LAW.			CHECKED:	APPROVED: R.D.WATSON	DATE: 17/07/02	2112W50082
					Copyright © 1999	Reyrolle Ltd